

Adopt • Medical Services • Donate • Animal Protection • Volunteer • Foster • Shop

June Adoptions

Cat/Kitten: 74 Dog/Puppy: 70 Rabbit: 4 Returned to Owner: 93

Total Adoptions: 148

THANK YOU!

We have been experiencing the 416 Fire for over a month now, and having homes evacuated from Hermosa to Purgatory in such a short time created many situations where pets had to be displaced from their homes.

When we received the call for the first pre-evacuations, the shelter and thrift store gathered the troops and opened our hearts and the shelter for all incoming evacuated pets. We suspended all operations to provide the utmost care to the families and pets affected by the fire. Our team worked hours on end, day after day to make sure that all the pets in our care were tended to and given the best possible care.



And during these busy few weeks we:

- Housed over 130 evacuated pets, dogs, cats, birds, guinea pigs, rabbits, turtles and ducks.
- Received over 25 bags of cat litter from donors.
- Volunteers all over the country sent us over 200 handmade kennel quilts.

- A wonderful plethora of new blankets, cat toys and dog toys were donated.
- A \$1,300 unrestricted donation from our friends at Sky Ute Casino.
- Over \$4,700 in unrestricted monetary donations received.
- AKC Reuite Program gifted over \$7,500 in equipment and supplies for the evacuated animals.

We are incredibly humbled by the amount of support the community has given to our shelter. The generosity to donate, volunteer and bring our very hungry staff meals is a gift - and we are honored to be part of such an amazing community!

Thank you for believing in our mission. Thank you for helping us save thousands of lives a year. Thank you for donating. Thank you for reaching out with a helping hand. Thank you for the kind words, the hugs, and the tears you have brought to our team. We couldn't do what we do without you!

Emily Phillips
Marketing & Development Coordinator

Join us to celebrate our beloved canine companions and the joy they bring to our lives. The 4th Annual Bow Wow Film Fest will be held on Thursday, August 2nd.

Doors open at 6:00 p.m. and show starts at 7:00 p.m.



[PURCHASE TICKETS AND EVENT DETAILS HERE](#)

From the Play Yard

Ken Hibbard, Education & Adoption Counselor

It's hard to imagine what LPCHS would be like without our dedicated volunteers! They help

make our shelter run smoothly and provide our dogs with so much love and attention.

Carolyn and I would like to first thank the play yard volunteers, Brenda, Candi, Jane, Judy, Lora, Lori, Michelle, and Victoria for their dedication to the yard. Throughout the fall, winter and spring they diligently ran dogs back and forth from the kennels to the yard, sat and watched the dogs' social interactions, and kept the yard picked up and clean. Because of their time and assistance, the dogs were able to enjoy quality social time! Thank you so much, ladies!



Volunteers Judy, David and Carolyn

More thanks go to our wonderful interns, Abby, Ellie, Morgan and Stella, who gave many of their Saturdays and holidays to help in the play yard and the kennels. They are amazing young people whose consistency and dedication to LPCHS is unrivaled. Last but not least, thanks go to the mother-daughter teams of Tiffany and Violet, and Sandra and Sullivan for kid-testing potential "Read Dogs". Then Sandra, along with Susan, took these dogs to Needham every Thursday and Friday and ran the "Read Dog" program there. This program helped hesitant young readers improve their fluency reading to dogs who needed love and attention. Such a win-win!

The play yard has been in use for about four years now but would not have been near as effective without our volunteers. Some much-needed improvements are on the horizon, so stay tuned! If anyone is interested in donating some time to LPCHS, please consider volunteering in the play yard, particularly on Mondays and Fridays, from 8:00 - 11:00 a.m. Carolyn or I will be happy to train any interested folk; just stop by and let us know.

The Bachelor or Bachlorette?

[Thumper](#)

Thumper, along with nine other rabbits were found abandoned in a field with only a small bale of hay to eat. Five have been adopted into loving homes and Thumper is patiently waiting for the right person.

Likes: Apples, lots of space to hop and the cult classic, "Who Framed Roger Rabbit".

Dislikes: Being poked, boring pellet-only diet and bad bunny jokes like, "What's a rabbits favorite TV Show? Hoppy Days".



Thumper is available for adoption!

Thumper is a sweetie, who enjoys a good pet and being cared for. A home with plenty of sunshine and space to hop around on would be ideal. If you are looking to fill your heart and

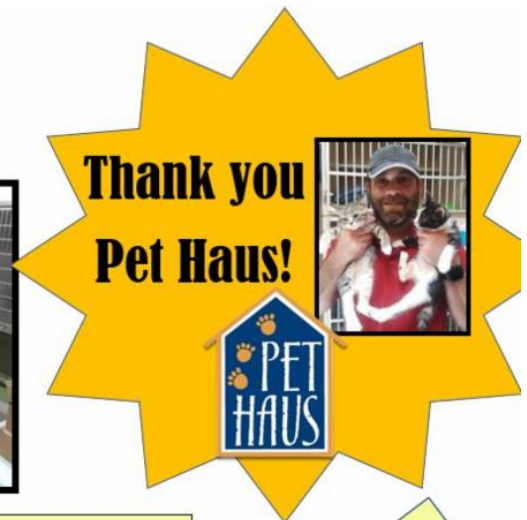
home with some rabbit love, come by the shelter and meet Thumper, or the four other rabbits that are available for adoption.

Thank You Pet Haus & Baby Shower Supporters!

[For Helping Us Remodel and Restock our Maternity Room](#)

Thanks to our amazing community and supporters, the LPCHS Baby Shower was a **HUGE** success! We raised over \$3,000 in supplies to help feed, house, and socialize La Plata County's puppies and kittens.

With excitement over the baby shower, our friends at Pet Haus made a substantial donation to help remodel our maternity room! As long time supporters of LPCHS, Pet Haus purchases a portion of our pet food annually, sponsors our yearly events and helps us find kittens forever homes by making them available for adoption at their store (over 640 of them! Wow!), but this donation is especially helpful by providing our young kittens a safe, clean, and more functional room to house them while they wait for their foster families.



The NEW maternity room features: A brand-new and easy to sanitize floor, bottle feeding station with rapid bottle warmer, refrigerator to chill formula and vaccines, check-in station to keep kittens with weak immune systems away from the general population, larger cages that provide more play space, sanitary storage for supplies, and new scales and thermometers for our foster program!

This community, our community, is incredible and we are so grateful and humbled by the outpouring of love and compassion towards animals, especially the babies that come into our care. It takes a village to run a shelter and you guys really stepped up to make this baby shower a total success. **THANK YOU!**

Chandra Fowler
Foster Coordinator

Tip of the Month

[Hot Asphalt Awareness](#)

It's important to remember that pavement can become sizzling hot and can have painful

consequences. Make sure your pet is protected this summer and know the difference.

Air vs Asphalt Temp

Air	Asphalt
77	125
86	135
87	143

125° F - Skin destruction occurs within 60 seconds.

131° F - Can fry an egg in 5 minutes.

Asphalt Safety Test

Press the back of your hand firmly against the asphalt for 7 seconds to verify it will be comfortable for your pet.

***Please remember to only walk your pet before 10:00 a.m. or after 6:00 p.m. during summer months to ensure your pets health and safety.**

HOT ASPHALT AWARENESS

AIR VS ASPHALT TEMP	
AIR	ASPHALT
77	125
86	135
87	143

125° F - skin destruction can occur in 60 seconds
131° F - an egg can fry in 5 mins

These temperature are worst scenarios: direct sun, no wind, low humidity & high radiant energy.

ASPHALT SAFETY
PRESS THE BACK OF YOUR HAND FIRMLY AGAINST THE ASPHALT FOR 7 SECONDS TO VERIFY IT WILL BE COMFORTABLE FOR YOUR PET.

espre.com

Trouble With Your Pup?

Basic Manners Classes

LPCHS hosts weekly classes to assist you with animal communication and excel with your dog. pranaDOGS manners classes are set up as drop-in classes, so you can come anytime your schedule permits....or when your dogs behavior demands it.

Level 1: Covers basic impulse control, communication and cues. This is a great place for dogs to have to focus on their family....with other dogs extremely close to them. Kids are always welcome!

Level 2: Practices basic behaviors in an advanced format. Work on staying and coming from 20' away with other dogs present, leash manners and advanced impulse control. Level 2 provides everything needed for a well-mannered dog and often the class alumni return when they want to do a little extra training with their pup.

1st class is always free, then \$25/per class or \$120 for 6 weeks.

Saturday Class Schedule

Level 1 - 11:00 a.m. (beginners)

Level 2 - 1:00 p.m. (advanced)



Marcy & Lady

To learn more, visit pranaDOGS.com

Wacky Wednesday

Every 1st and 3rd Wednesday of Each Month

50% off Entire Store

Our donation drop-off center is open 7 days a week from 9:00 a.m. - 4:00 p.m.

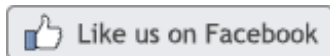
Donating or purchasing furniture?
We pick up and deliver 5 days a week.

To view delivery costs, or submit online pick up request, visit lpchumanesociety.org



*Each donation and purchase helps save the lives of
homeless pets in La Plata County!*

Don't forget to follow the Thrift Store on Facebook and Instagram

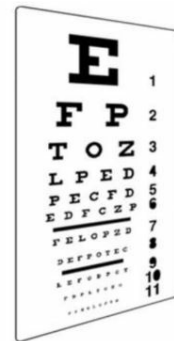


The More You Know

How's Your Dogs Eye Sight?

Dogs vision is very different than ours; dogs can't see colors, brightness, or shades of contrast like us. And they're near-sighted, so they can't see things in the distance clearly. If they were human, they would be in glasses from the time they're puppies!

But dogs are amazing and most do just fine in spite of us not 'correcting' their vision. Some however, struggle. They hide, flinch, are quicker to react, jump when something moves in the distance and perform a variety of other cute, and not-so-cute behaviors.



Dogs Don't Wear Sunglasses

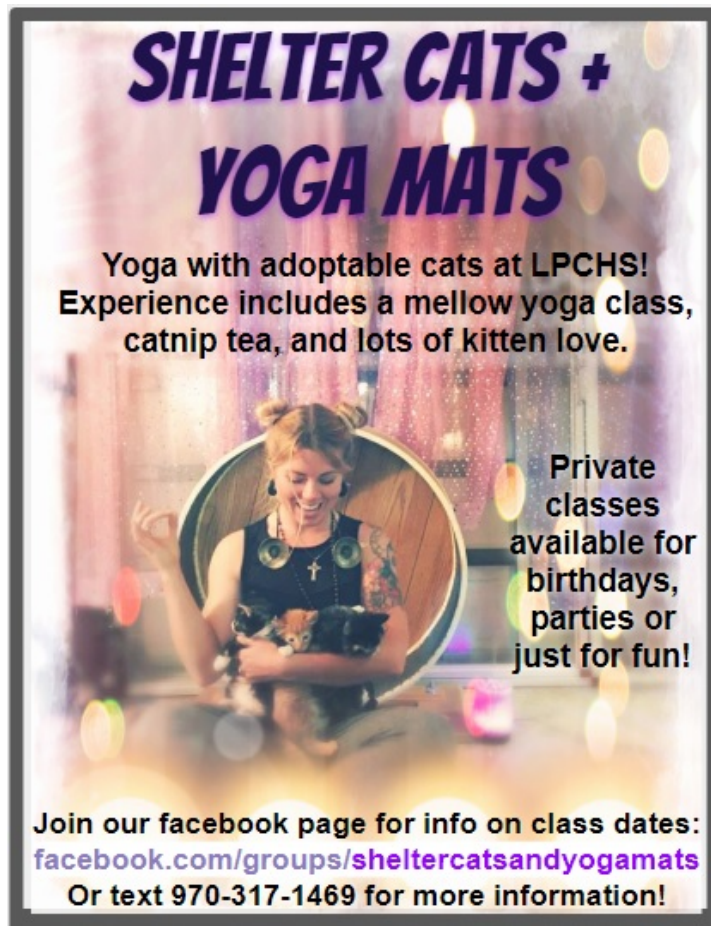
Think of how bright the sun can be, especially when you first walk outside. Go slow with your pup And if they're hesitating, give them a second to get their bearings

Consider, when we have bad vision....

- We flinch more
- We move slower
- We react when something moves quickly

How About Your Dog? [Click Here Learn More](#)

Marcy Eckhardt is LPCHS's Trainer and the owner/trainer of pranaDOGS, a company focused on individualized training for shelter and rescue dogs training@pranadogs.com.



Cat yoga is continues to be held on the **first Wednesday of every month at 5:30** at the shelter. Pre-registration is required. We are now offering private cat yoga for parties and team work building too!

To learn more and to register, email Chandra at chandra@lpchumanesociety.org

Mutts in the Mountains

Saturday, July 28th

Did you know that a group of volunteers take our dogs for a scenic mountain hike? Sounds fun, right? Well, you can be a part of it and join in!

For 3-hours every month, our dogs enjoy a hike with volunteers on the beautiful trails surrounding Durango.

If you're interested and want to learn more, please contact Volunteer Coordinator, Carolyn Bollinger at carolyn@lpchumanesociety.org or by phone at (970) 259-2847 x108



"The Mutts Crew", made up of our awesome volunteers and shelter dogs!

Dress appropriately for weather, bring plenty of water, and a collapsible dog bowl for your furry companion.

Thank you to our friends at



for always supporting the animals of La Plata County.

[Durango Motor Company](#) is the Ford, Lincoln, Toyota, Kia, and used car dealership in Durango, Colorado. Their Best Price selling philosophy means no haggle and no hassle to ensure that every guest gets the same low price, always. Their success is based on how satisfied you are with your purchase, and our non-commissioned sales consultants are here to provide a great experience for our guests. Durango Motor Company our goal is to be an industry leader in providing unmatched quality automotive products and service while continually striving to meet the changing needs of our guests.

Ebay

[eBay for Charity Makes it Easy to Support LPCHS](#)

eBay buyers and sellers have several options when it comes to donating to their favorite charities. How does it work?



Buying to benefit LPCHS:

- **Buy items where the seller has committed to donating all or part of the proceeds to your charity of choice.** Look for the charity ribbon icon in the item description when browsing for items, or find your favorite charity in the [Charity Shop](#) and browse all listings that benefit that particular charity.
- **Make a donation to your favorite charity during the checkout process when buying any item on eBay.** [Browse for your preferred charities](#) and select them as your favorites, then every time you pay for items on eBay you'll have the option to also make a donation to a favorite charity.
- **Donate directly to your favorite charity with the Donate Now button.** Navigate to your favorite charity through the Charity Search on [eBay for Charity](#), then donate your chosen amount through PayPal.

Selling to benefit LPCHS

Sellers have two options when listing items to benefit charities on eBay:

- **Community Selling:** Donate up to 100% of your final sales price to support your chosen charities. You can customize the donation percentage and the charity you want to support for each individual listing. Minimum donation amount is 10% or \$1, or 1%

for eBay Motors listings.

- **Direct Selling:** You can associate an eBay username with a specific charity. All sales associated with this username are considered Direct Selling for the charity, and 100% of selling proceeds will benefit that named nonprofit.

When your item sells, you don't have to do anything. Three weeks after the sale, PayPal Giving Fund will automatically collect the donation from you.

-

To learn more, visit [ebay.com](https://www.ebay.com)

Give a Helping Hand

There are a Number of Ways to Support Our Mission

- Become a member
- Become a foster parent
- Volunteer
- Give a pet a second chance through adoption
- Shop at our Thrift Store - Voted #1 "Best of Durango" for 2016 & 2017
- Choose LPCHS as your preferred charity when purchasing through [AmazonSmile](https://www.amazon.com/?ref=af_pn_charity)
- Link your [City Market Card](#)
- Add us as your favorite charity on [eBay](#)
- Donate [online](#)
- Follow us on Facebook, Instagram and Twitter
- Tell a friend about our organization



To learn more, visit lpchumanesociety.org

Connect With Us!



Contact

1111 S. Camino del Rio
Durango, CO 81303
970.259.2847
pr@lpchumanesociety.org