

# February Newsletter

Give Now



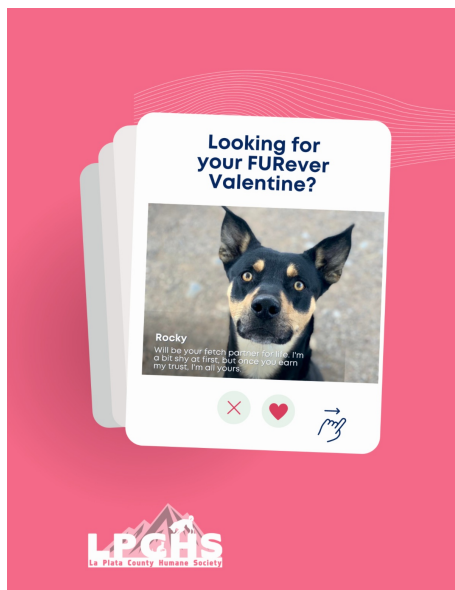
## January Adoptions

Cats - 58 Dogs - 73 Reunited with their families - 32

**Total Adoptions - 131**

## Meet Your Match

Fall in Love this month



Meet the love you've been looking for right here at LPCHS! Take a look at our [website](#) and see if you find a pet that looks like the perfect match for you!

Meet Your Match

## Rabies Vaccine Clinic

Thursday, February 10th 1:00 p.m. - 3:00 p.m.

Our [Rabies Vaccine Clinic](#) will be held on Thursday, January 13th from 1:00 p.m. – 3:00 p.m. at [LPCHS](#).

- Rabies vaccination cost \$25
- You may request other vaccinations at an

## RABIES VACCINE CLINICS

RABIES CLINIC  
LA PLATA, MONTEZUMA  
& ARCHULETA COUNTY



- additional cost.
- License your dog

Sign up [here](#). Submit the form and a team member will call you to schedule an appointment. Payment is due at time of scheduling.

[Learn More](#)

## Speed Dating at Ska Brewing

Saturday, February 12th from 6:00 p.m. to 8:00 p.m.



Join us at the [Ska Brewing](#) on Saturday, Feb. 12th from 6pm-8pm for our [Pet Speed Dating Puppy Adoption Event](#)! We will be bringing a group of puppies who are ready for adoption. All puppies come spayed/neutered, have their first round of vaccines, and are microchipped and loved. If you are interested in adopting, submit an [adoption application](#) and get pre-approved prior to the event.

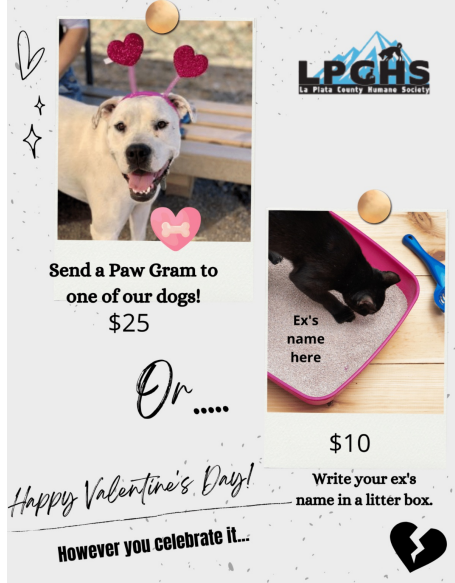
[View Event Details](#)

## Valentine's Paw Gram or Dump for the Dumped

Purchase Yours Today!

Love is in the air, or is it?

However you celebrate Valentine's Day, we got you covered. We are offering [Paw Grams](#) or writing your ex's name in a litter box with [Dumps for the Dumped](#)! How do you do this?



Text "paw" for a [Paw Gram](#) or "dumped" for [Dumps for the Dumped](#) to (970) 676-6963 or you can donate directly, just click the links.

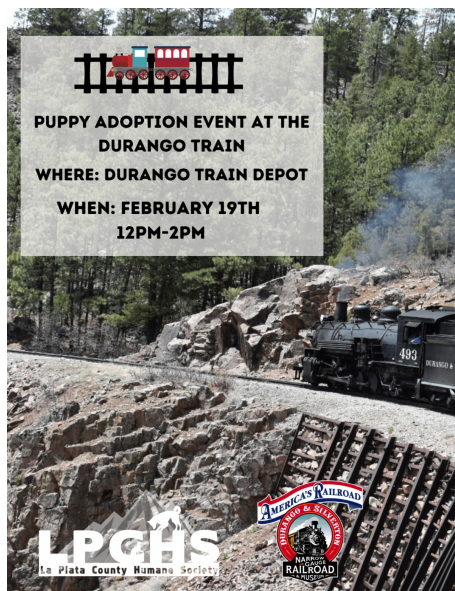
If you want to send a specific dog a [Paw Gram](#) or let us know the name of your ex to write in a [litter box](#), tell us in the comment section of the donation section.

[Paw Grams](#)

[Dump for the Dumped](#)

## Puppy Adoption Event at the Train Depot

Saturday, February 19th from 12:00 p.m. - 2:00 p.m.



Join us at the [DSNGRR Train Depot](#) on Saturday, Feb. 19th from 12pm-2pm for our [Puppy Adoption Event!](#) We will be bringing a group of puppies who are ready for adoption. All puppies come spayed/neutered, have their first round of vaccines, and are microchipped and loved.

If you are interested in adopting, submit an [adoption application](#) and get pre-approved prior to the event.

[View Event Details](#)

## Foster Parents Needed

Accepting Applications

**We are in need of puppy fosters!** You can make an immediate and lasting impact on an animal's life as a foster parent. Foster parents provide crucial loving care



and housing for animals in need of a quiet space and individual attention. Our program finds temporary and long-term homes for animals that might need extra time and a chance to thrive before finding their forever homes.

[Learn More](#)

---

## Low Cost Spay and Neuter Clinics

### Now Scheduling



We offer low cost spay and neuter clinics to the community. Our spay and neuter surgeries help keep pet populations down and help pets live longer and healthier lives. We offer a variety of services, including our free community cat program (TNR).

[Learn More](#)

---

## Shop for a Cause

**LPCHS Thrift Store Directly Impacts Homeless Pets**

Support homeless animals by shopping and donating to the [LPCHS Thrift Store](#). The store generates important and necessary revenue that supports our mission to enhance and protect the lives of





companion animals. Donated furniture, household items and clothing are just a few of the items you can purchase to help pets.

[View Hours and Location](#)

---

## Basic Manners Classes

### Trouble With Your Pup?



LPCHS hosts weekly classes to assist you with animal communication and excel with your dog. [pranaDOGS](#) intro level class focuses on communication and relationship building by practicing and perfecting the Top 10 Behaviors all dogs need to know. These semi-private classes are a perfect way to start a relationship with a new pet or restart training with a current one.

[Learn More](#)

---

## Give a Helping Hand to Animals in Need

### Ways You Can Help

There are a number of ways you can help throughout the year.

Visit our [website](#) for all the ways to lend a hand and help us, help them, one paw at a

**CAN I CRASH  
AT YOUR PLACE  
FOR A LITTLE?**



## A close-up photograph of a black and white husky dog. The dog is looking directly at the camera with its mouth open, showing its pink tongue. It has distinctive white markings on its face, including a blaze between its eyes and white fur around its muzzle. Its ears are large and pointed upwards. The background is a blurred, sandy or rocky ground.



**LPCHS**  
Let's Push Every Student Forward

